

**City of Oak Harbor
City Council Agenda Bill**

Bill No. a.
Date: September 1, 2015
Subject: Resolution 15-27: Adopting an
Architectural Concept for the
Clean Water Facility

FROM: Cathy Rosen, Public Works Director and Joe Stowell, City Engineer

INITIALED AS APPROVED FOR SUBMITTAL TO THE COUNCIL BY:

- Scott Dudley, Mayor
- Larry Cort, City Administrator
- Doug Merriman, Finance Director
- Nikki Esparza, City Attorney, as to form

RECOMMENDED ACTION

It is recommended that the City Council adopt Resolution 15-27 Adopting an Architectural Concept for the Clean Water Facility.

BACKGROUND / SUMMARY INFORMATION

The City of Oak Harbor is actively pursuing the replacement of two aging wastewater treatment plants with a new, state of the art, membrane bioreactor treatment plant. After an extensive site selection process, City Council selected the Windjammer Vicinity on August 14, 2012 by Resolution 12-17.

Selecting the Windjammer Vicinity requires attention to appearance and aesthetics. With that understanding, the project team initiated a public process to involve the community in the treatment plant exterior appearance.

A charrette group representing interested parties from the city was formed to provide input on the design as it progressed. The charrette groups met twice during the design process to establish guidelines, provide suggestions and review the progress to date. Based upon the charrette group guidance, the design team prepared two concepts that met the intent of the process. These two concepts, called Concept A and B, are shown in Exhibit 2 of Resolution 15-27. These concepts are considered to be at 60% completion.

On August 12, 2015, these two concepts were presented to a wider city audience for comment. An open house was widely advertised by media and direct mailings. Approximately 43 people participated in the open house of which 11 completed comment forms. An on-line open house was also made available from August 13, 2015 through August 21, 2015. The open house and the on-line survey gathered approximately 128 comments. The actual comments and a summary are attached to Resolution 15-27 as Exhibit 2. Based on the comments received and the online survey approximately 80% of the respondent's preferred Concept B and 20% of the respondents preferred Concept A.

The following bullets summarize the highlights of the comments received during the open house process.

- Preference for Concept B
 - 78% felt Concept B best fit into Windjammer Park
 - 84% felt Concept B materials best set tone for the park/ downtown
- Recognition the facility will set a new tone in/around Oak Harbor and Windjammer Park
- Little to no changes of views to Oak Harbor Bay
- Landscape design has potential to improve sidewalks and park access
 - 75% felt that planting reflect the beach park setting
- Lively input toward education/interpretive elements

Based on the comments received, Concept B appears the preferred choice to use as the basis for final design. With selection of this concept, the project team can complete design and permitting activities necessary to construct the facility. It should be noted with the design is at 60%. Some changes or refinements of the design will probably occur. The project team anticipates a presentation of the final design to the public and City Council prior to releasing the design for construction.

The attached Resolution 15-27 selects Concept B and authorizes the project team to proceed with final design and permitting based on the architectural design concepts presented in that concept.

FISCAL IMPACT

Funds Required: \$0

Appropriation Source: Wastewater Fund

PREVIOUS COUNCIL / BOARD / CITIZEN INPUT **CITY COUNCIL WORKSHOP**

This item was discussed at the August 26, 2015 City Council Workshop.

CITY COUNCIL PREVIOUS ACTIONS

This item has not been presented at previous City Council Meetings.

ATTACHMENTS

1. [Attachment A - Resolution 15-27 Adopting an Architectural Concept for the Clean Water Facility](#)
2. [Exhibit 1 - Renderings of Concepts A and B](#)
3. [Exhibit 2 - Design Concept Open House Feedback Summary](#)

CITY OF OAK HARBOR
RESOLUTION NO. 15-27

**A RESOLUTION ADOPTING AN ARCHITECTURAL CONCEPT FOR
CONSTRUCTION OF THE CLEAN WATER FACILITY**

WHEREAS, the City of Oak Harbor is constructing a wastewater treatment plan called the Clean Water Facility; and

WHEREAS, as result of a public selection process the City of Oak Harbor will locate the Clean Water Facility in Windjammer Park; and

WHEREAS, the Windjammer Park location requires attention to the appearance and aesthetics of the Clean Water Facility; and

WHEREAS, the City of Oak Harbor engaged in a public review process which included design charrettes, open houses, and on-line communications addressing the appearance and aesthetics of the Clean Water Facility;

WHEREAS, in light of the unique functional requirements of the Clean Water Facility, the project team developed two architectural concepts referred to as Concepts A and B, shown in Exhibits 1;

WHEREAS, the concepts were vetted with the public through an open house and on-line survey to determine public preference, which are summarized in Exhibit 2:

NOW, THEREFORE BE IT RESOLVED by the City Council of the City of Oak Harbor that:

1. Select Concept B as the preferred architectural concept for the facility.
2. Instruct the project team to advance Concept B from its current 60% completion status to final design.
3. Use Concept B as the basis for any regulatory permits associated with the project.
4. Bring the final design forward for public review at a later date.

PASSED by the City Council and approved by its Mayor this 1st day of September, 2015.

CITY OF OAK HARBOR

SCOTT DUDLEY, MAYOR

Attest:

Approved as to form:

Anna Thompson, City Clerk

Nikki Esparza, City Attorney

Design Concept A: Administrative Building (View from SW)



Design Concept B: Administrative Building (View from SW)



Preferred Alternative

Design Concept A: Administrative Building (View from S)



Design Concept B: Administrative Building (View from S)



Preferred Alternative

Design Concept A: Electrical Building (View from NW)



Design Concept B: Electrical Building (View from NW)



Preferred Alternative

Design Concept A: Headworks Building (View from NE)



Design Concept B: Headworks Building (View from NE)



Preferred Alternative

Design Concept A: Solids Building (View from SE)



Design Concept B: Solids Building (View from SE)



Preferred Alternative

City of Oak Harbor Clean Water Facility Project



Design Concept Open House Feedback Summary

September 1, 2015

Overview

The Oak Harbor Clean Water Facility Project is currently working on final design, with a groundbreaking anticipated in fall 2015. Public feedback is a key element toward completing final design on this facility that will be integrated into Windjammer Park. In 2014 and early 2015, the design team worked to develop early site planning, then design concepts and ideas in focused workgroup setting (“charrettes”), bringing together small groups representing varying perspectives of the Oak Harbor community. This early input has been shared with City Council, and has furthered 30% architectural design to 60% design. In August 2015, the City hosted both an in-person and online open house to gather input from the community at large. At both open houses, the public had the opportunity to learn about project progress, view ideas from two charrette group meetings, and give feedback on two architectural concepts for the Clean Water Facility.

Executive Summary

This Design Concept Open House (in-person and online) is the third step in gathering community feedback on clean water facility design after two early meetings with the charrette group in late 2014 and mid-2015. Two design concepts were offered for public feedback, and that feedback is anticipated to be a key factor driving Council direction on a final design concept in September 2015. A total of 187 people participated through these two open houses. Based on all feedback, the following themes have emerged:

- Those who participated **preferred the setting and materials of Concept B**. These responses indicated that this concept was more indicative of Northwest and modern design elements, and is less “institutional” than Concept A.
- Across all topics, be it views, materials use, or landscape, there is **recognition that this facility will set a new tone in and around downtown Oak Harbor and Windjammer Park**. Those who participated recognize the potential for architectural precedent and impression the facility will have in this area of the city.
- **Participants noted that the concepts offer little to no changes to views to Oak Harbor Bay**, and reflected that the facility either enhanced or did not change the view from Windjammer Park. Respondents reacted positively to the view of Pioneer Way stating that it was improved or unchanged.
- **Participants agreed that landscape design has the potential to improve sidewalks and access to Windjammer Park**. Several participants urged the City to incorporate Garry Oak into the landscape design and appreciated the native beach landscaping and use of drought resistant plants.
- **There was lively input toward educational/interpretive potential of the new facility**. Participants suggested incorporating Native American and Oak Harbor history into educational and interpretive displays. Participants also suggested incorporating an explanation of the facility’s operation from an engineering or scientific perspective, relay how the wastewater system also is

part of the local ecological/environment, and incorporate local animal and plant life. Participants noted that displays should also be age appropriate, in height/location and content.

Notifications

The project team advertised the in-person and online open houses between July 31, 2015 and August 21, 2015. Notifications included the following:

- Whidbey News-Times ad (print and online)
- Whidbey Weekly ad (print)
- Slide on Channel 10
- Postcard sent to all residents within Oak Harbor city limits
- Business cards at in-person open house and City Hall

Type	Publication	Circulation (estimated)
Online	Whidbey News-Times (Aug. 1 – 21)	46,224 impressions, 13 clicks
Print	Whidbey News-Times (Aug. 5 and 8)	9,800 total (4,900/issue)
	Whidbey Weekly (Aug. 5)	9,800
Television	Channel 10 ad "City Updates" show on Aug. 14	n/a
Direct mail	Postcard	10,638
Handouts	Business card with online open house information	250
Update to City Council	Aug. 24	n/a
"Touch a Truck" Public Works event	Aug. 18	Talked to a number of people

Attendance and visitor statistics

- In-person open house attendance: 43
- Online open house visitors: 144
- In-person comment forms completed: 11
- Online Open House feedback received: 128 survey answers

<i>In-Person Open House Attendee/ visitor Statistics</i>	<i>Online Open House Analytics</i>
<ul style="list-style-type: none"> • Approximately 43 participants attended the in-person open house on August 12, 2015; 40 of them live in Oak Harbor. • 14 emails were gathered and added to the email subscriber list 	<ul style="list-style-type: none"> • 144 visitors • Of the 144 online open house participants. • 11 identified in the online open house that: <ul style="list-style-type: none"> ○ 90% live in Oak Harbor ○ 10% visit Oak Harbor ○ 0% work in Oak Harbor <p><i>*based on optional self-identification</i></p>

Feedback Methods

In-Person Open House

The City gathered feedback during an open house at the Elks Lodge in Oak Harbor on August 12, 2015, from 6:00 p.m. to 8:00 p.m. Participants contributed via two methods: comment cards and feedback boards, after first hearing a presentation overview of the design concepts. The comment cards fielded

general input about design and the feedback boards asked participants specific questions. Comments and feedback received at the open house are shown in Appendices 1 and 2.

Online Open House

In order to reach Oak Harbor residents who were unable to attend the in-person open house, the City advertised an online open house, available August 13 to 21. The online open house consisted of images and questions/surveys that gathered specific feedback in a similar fashion to the feedback boards at the in-person open house. The online open house also included an open response comment box, which provided respondents the opportunity to share their general comments. Comments written in the comment box and survey results are listed in Appendices 3 and 4.

Feedback Overview and Selected Quotes

(Received from both the in-person open house and from online open house.)

1. Design Concepts – Setting

Participants preferred Concept B to Concept A and noted a preference for Northwest style and modern design elements in Concept B rather than Concept A. Below are the results from the online open house surveys and in-person feedback boards, including a selection of participant comments from both open houses.

Concept A	Concept B
22% of all feedback received felt Concept A best fit into the Windjammer Park location. <i>"Concept A provides cleaner lines, and blends with surroundings."</i> <i>"This looks <u>too</u> industrial for a park (don't like it)"</i>	78% of all feedback received felt Concept B best fit into the Windjammer Park location <i>"Much more inviting"</i> <i>"More Northwest design elements than A"</i> <i>"A is too 'municipal'... B's design has some style and movement and might encourage some new thought toward design in the general area."</i> <i>"I was born and raised in OH and am now raising my own family here. Having said that I must say that I am partial to the design (B) that features more wood and angles. It feels like it belongs in OH more than the sleeker design (A), which would be at home in a Seattle suburb."</i>

Overall:

Participants online were split for the level of statement the facility should make in Windjammer Park. 48% of online open house participants felt that the design should "make a statement" while 52% felt that the design should provide or fade into the backdrop.

"Keep the training/conference space. It's a great asset to this project + there's nothing like it in Oak Harbor."

2. Design Concepts – Materials

Participants reiterated their preference for Design Concept B, noting that it felt modern, and reflective of the Northwest with materials, including timber. Below are the results from the online open house surveys and in-person feedback boards, including a selection of participant comments from both open houses..

Concept A	Concept B
<p>16% of all feedback received indicated Concept A best set a tone to be repeated either within the park and/or in future downtown development.</p> <p><i>"Reflects the purpose of the facility."</i></p>	<p>84% of all feedback received indicated Concept B best set a tone to be repeated either within the park and/or in future downtown development.</p> <p><i>"The wood look is the Northwest look"</i></p> <p><i>"This design seems more reflective of the community - OH."</i></p> <p><i>"I like the heavy timbers and exposed rafters. It creates a more welcoming feeling. I like the colors of concept B."</i></p>
<p>General:</p> <p><i>"Incorporate the unique roof line of the old Pioneer Dept store/Co-Op and the brick Diamond pattern of the old Kennel (now Off the Hook)"</i></p> <p><i>"None of these look like seaside or nautical structures."</i></p>	

3. Landscaping and Public Space

Most participants indicated they felt the updated landscape design improved sidewalk and park access. Participants urged the City to incorporate the Garry Oak into the landscape design and appreciated the incorporation of native beach landscaping and drought resistant plants. Below are survey results from the online open house, summary of in-person open house feedback, and a selection of participant suggestions from both open houses.

Improve Sidewalks and Park Access

Feedback summary:

78% of online open house participants felt that the landscape site plan and design improved the sidewalks and park access, while 22% did not. The in-person open house comments reflected a concern for pedestrian safety and appreciation for the design's improvement of sidewalks.

Selected comments:

"It looks like it directs foot traffic in effective pathways."

"There was never any obstruction or problem with parking, park access or sidewalks to begin with."

Plantings Reflect Beach Park Setting

Feedback summary:

75% of online open house participants felt that the plantings reflect the beach park setting while 25% did not. The in-person open house participants similarly felt that the plantings reflected the beach park setting.

Selected comments:

"Love using native beach landscaping & WI plants"

"I don't negatively about the landscaping – I just don't know that the plantings particularly reflect the beach park setting. The plantings are nice and hopefully will help to de-emphasize the sheer size facilities building in that location."

General

"Just keep the landscaping simple but refreshing with some benches and tables to enjoy."

"I like the other landscaping elements, including the use of reclaimed wood."

"A water feature is desired."

"Don't skimp here! This is what the public sees on a daily basis."

4. Views and Sightlines

Participants noted small or no change in view from City Beach Street to the Bay and noted that the facility either enhanced or did not change the views from the park. The view of Pioneer Way and downtown received the most positive feedback, stating that it was improved or unchanged. Below are survey results from the online open house and a selection of participant suggestions from both open houses.

***City Beach Street to the Bay
Feedback summary:***

55% of online open house participants felt the **view was enhanced/maintained**. In-person open house participants largely felt the view was enhanced/maintained.

28% of online open house participants felt the **view was not enhanced/maintained**.

17% of online open house participants did not have an opinion.

Selected comments:

*View is not affected much."
"Negligible difference in view."*

***Views from the Park
Feedback summary:***

74% of online open house participants felt the **view was enhanced/maintained**. Most of the in-person open house participants felt the view was enhanced/maintained.

21% of online open house participants felt the **view was not enhanced/maintained**.

5% of online open house participants did not have an opinion.

Selected comments:

*"RE: View from Parking Lot - It is not an issue as long as the trees are leafed out. Concept A, if kept with dirty white brick will detract from the view once the leaves fall. RE: View from Park Baseball Fields. Concept A looks like a dirty which institutional/industrial building in the background."
"New facility actually enhances this view."*

***Views from Pioneer Way/downtown
Feedback summary:***

73.7% of online open house participants felt the **view was enhanced / maintained**. All of the in-person open house commenters felt the view was maintained/improved.

21.1% of online open house participants felt the **view was not enhanced / maintained**.

5.3% of online open house participants did not have an opinion.

Selected comments:

*"Much better view. Greener, inviting."
"This will be an improvement."*

5. Educational and Interpretive Opportunities

Participants suggested incorporating Native American history and Oak Harbor history in education displays. Additionally, participants suggested explaining how the facility works from a scientific perspective and providing age-appropriate displays. Below is a selection of participant suggestions.

History and local lore

*"...this needs to be included with some vintage photos of O.H."
"Interpretive signage about the historic use of the site by native groups would be welcome."*

Biology and ecology

*"Include some... not a bunch."
"Reach out and ask the schools what they'd like."*

Wastewater engineering and infrastructure

*"What 'bugs' are involved and how does it work?"
"Why is it good/important to treat wastewater?"*

Other ideas

"You need to have windows that run all the way down almost to ground level. I guarantee that every 3 or 4 year old will want to see inside to find out 'where all the poop goes,' and their Dads and Moms will have to lift them up to see inside under these current designs. You will make these windows ADA accessible also by putting them low enough so someone seated in a wheelchair will be able to see inside."

Additional Themes and Comments

The following were additional themes heard, beyond those questions posed about Concepts A and B and project architectural and landscape design.

- Ideas were heard that the facility should use ecological methods to conserve resources.
*"Compost the biosolids? You have community members who have won the Composter of the Year award from the U.S. Composting Council."
"You can use reclaimed water for all the landscaping"
"Investigate use of reclaimed water to recharge the City/Island aquifer [sic]"*
- There was some conversation about the need for a training facility/multi-use room at the facility, noting an understanding that this is a live conversation for decision-making by City Council. Comments were nearly split to this effect for/against the having the facility, generally reflecting a preference toward reducing cost where possible on the project.
- Participants reflected that where possible, landscaping and landscape design should incorporate the native Garry Oak.
"Plantings of our native Garry Oak should be prominent in this facility."

"Please find someone to make artistic use of the old oak tree that Mayor Dudley had cut down at the post office."

"Both [design] concepts are too contemporary. Neither designs capture a historical NW theme. Neither designs capture the historical significance of Oak Harbor. Neither designs provide a connection to Oak Harbor's namesake – the Garry Oak."

"I see there is no use or plan of use of Garry Oaks in the plants. This may be a concern of aesthetics and ease of cultivation over ecology, but the Garry Oak is Oak Harbor's namesake and the only native oak to our area. It can flourish in a wide range of habitats with a range of growth forms, from a large spreading canopy to a low craggy shrub. These trees can be found on south facing aspects throughout the region and it would be lovely to see some incorporated into the planting plan."

- Some in-person open house participants expressed concern that Bayshore Drive would cut through the park as the facility comes to fruition in the future, and additional Windjammer Park development takes place.

"Don't build Bayshore past the plant toward the RV Park."

"...anything to do with Bayshore Drive would lose the ball park and aesthetics. Don't do it."

Next Steps

All feedback presented here is being provided to City Council for consideration on August 26. City Council is expected to provide formal direction to staff on September 1. The final design process will continue through fall 2015, with an expected groundbreaking on the facility in late fall 2015.

Appendices

1. Comments gathered at in-person open house
2. Feedback from boards at in-person open house
3. Feedback board photographs
4. Notes from question and answer session at in-person open house
5. Online comments
6. Full survey results
7. Advertisements and notifications
8. Susan Myers feedback

Appendix 1: Comments Gathered at In-person Open House

Note: comments are verbatim as written.

Live	Work	Visit	Name	Comment
	X			No training facility - we don't need it as part of the sewer plant. No metal around the widows. Brick is not "beachy", stones are. Keep as many trees as you can on the south side. Don't build Bayshore past the plant toward the RV Park. Please use more wood beams.
X			Sondra Keitle	I like the look of Concept A. But, anything to do with Bayshore Drive would lose the ball park and aesthetics. Don't do it.
X				I do not [illegible] the need BUT I am concerned about unnecessary cost being passed on to rate payers. What/how is the training facility or any new road connected [sic] to the functioning of the waste-water treatment facility. NONE - Any cost associated with that portion of the project need a different funding source than the rate payers.
X	X			[Indicated that Concept B is "much better"] Please use all the effluent in a positive way (irrigate/water lawns and plants in the parks) instead of discharging it into the bay. We have an opportunity to make this a great improvement to our city - incorporate the training room and view of the water.
X				I hope to see an union between Concept B and the beach [illegible] landscaping w/ water features uniting them. Concepts could be improved to be even more NW in style.
X				I was born and raised in OH and am now raising my own family here, so I'm committed to this community. Having said that I must say that I am partial to the design (B) that features more wood and angles. It feels like it belongs in OH more than the sleeker design (A), which would be at home in a Seattle suburb.
X				Inquiry should be made of the schools, at all levels, for insight into "Interpretive" facilities.
X				[wrote "retired" on email line] Looks like built in 1960s - In 2050 - will look ancient - Would like something that <u>looks modern with more glass</u> . More <u>classic</u> .
X				If I HAD to choose between A + B I would choose B. The stone brick material used in concept A looks cheap and old fashioned. It's similar to SVC and the library. It's dated. It's the colors and the brick - the blond-ish orange-ish color is not attractive.
X	X			Like the look & feel of concept B - northwest style. Can install/use reclaimed water for <u>all</u> new landscape. Investigate use of reclaimed water to recharge the City/Island water aquifer [sic].
X			James Meany	Why are we having a training room for 7 employees? Training room for collage students it would get use maybe 2 - 3 time a year. What extra rooms do we need gym public meeting rm. No cut the costs keep it a work place Ground floor public area walk through ED. Looks ok. Not a lot of extra unused [sic] offices.

Appendix 2: Feedback from Boards at In-Person Open House

Design Concepts – Setting

Concept A
7 dots
<ul style="list-style-type: none"> • "Colors, profile - materials" • "Bad design - too blocky; boring" • "This looks <u>too</u> industrial for a park. (Don't like it)"
Concept B
17 dots
<ul style="list-style-type: none"> • "More Northwest design elements than A" • "Agree" • "Natural wood look is more in harmony with a park" • "Because it doesn't look like a factory" • "Clean lines - open - looks more welcoming (less institutional)" • "Much more inviting" • "Need more drama: <ul style="list-style-type: none"> - Bigger windows - Bigger awnings & overhangs - Stone - More timber - Not so much brick, more steel on walls"
General Comments
<ul style="list-style-type: none"> • "People, whether tourists or locals, look for an "experience." A commercial look in a park setting conflicts & does not contribute to the 'park' experience." • "I agree with the above statement" • "Keep the training/conference space. It's a great asset to this project + there's nothing like it in Oak Harbor. It would be incredibly hard to add something like later. Keep the proposed size of the trng space and the view of the water."

Design Concepts – Materials

Concept A
5 dots
<ul style="list-style-type: none"> • "Reflects the purpose of the facility" • "Looks old/dated – 1960s style. Looks like an 'air conditioner.' Don't like this one." • "This old lady prefers this one!"
Concept B
21 dots
<ul style="list-style-type: none"> • "NW Look!" • "Slanted roof lines" • "Closest to a 'Pioneer downtown' look" • "Open look & easier clean up after sea gull mess" • "Does not look like a prison!"

- "This design seems more reflective of the community – OH"
- "Like the big timber"

General Comments

- "Both"
- "Looks like 1965 - this is not meant positively"
- "Lots of [illegible] elements – very [illegible]"
- "I believe this can be positive [indicating 1965 comment] – much of Oak Harbor’s development occurred during that [illegible] period. Modern design based on mid-century styles is appropriate"
- "Don't like all the wooden slats in Concept A"
- "Can we use blinds or tinted windows inside to control sunlight?"
- "Remember – this will set arch. style for the city"
- "Let's update the restrooms + kitchens in the park. Current ones really need to be replaced. They are not a good reflection of our community park – restrooms + kitchens.)"
- "Like the darker brick"

Landscaping and Public Space

Does the design improve sidewalks and park access?	Do the plantings reflect the beach park setting?
<ul style="list-style-type: none"> • "Improves sidewalks - yay!" • "Increased traffic on City Beach <u>may</u> cause traffic changes @ Bayshore (running stop sign) • "Consider plantings/swails btwn sidewalks + traffic (protect pedestrians + more attractive)" 	<ul style="list-style-type: none"> • "Somewhat – if it goes thru as presented" • "Prefer as many drought resistant plants as possible" • "<u>Love</u> using native beach landscaping & WI plants <3" • "Consider swails and using rainwater in the landscaping."
Any other thoughts?	
<ul style="list-style-type: none"> • "Spend [illegible] on landscape - better in the long run" • "Sitting areas/pocket parks" • "Don't cheap out on the design" • "This facility will set the architectural precedent (keystone) for our community!" • "You can use reclaimed water for all the landscaping" • "Don't create a haven for rats, raccoons and homeless people in the underbrush" • "Look to 'Anacortes' for design & people spaces (tables, hanging baskets)" • "Mall in Lynnwood/Pocket Parks" • "A water feature is desired." • "A water feature that you can sit beside as water circulates over large slabs as a backdrop" • "Don't cut down the trees in the parking area on the south side." • "Save some of the cedars if possible." • "Port Orford cedar" 	

Views and Sightlines

City Beach Street to the Bay

- "Negligible difference in view"
- "The view from Bayshore or Pioneer in front of restaurant will be significant when looking toward Windmill (SW).

Views from the park

- "Not much change"
- "New facility actually enhances this view"
- "View from E looking W. have gate + wall lower instead of a vertical gate use a horizontal gate. Lower walls + gates as much as possible - perception can be a very powerful thing.

Views from Pioneer Way/downtown

- "This will be an improvement."
- "Love"
- "Very nice!"

Educational and Interpretive Opportunities

History and local lore

- "History of OH & Whidbey back to 1850's to present is phenomenal:
 - Indians
 - WWI + WWII
 - How we were formed
 - Plants, trees, fish
 - History of marina + town"
- "Interchange displays - display topics are unlimited + vast"
- "We have one of the very best history in the nation."

Biology and ecology

- "What 'bugs' are involved + how does it work?"
- "What is our impact - how do we lessen impact"
- "Reach out & ask the schools what they'd like"

Wastewater engineering and infrastructure

- "How does it work?"
- "What is the process?"
- "Why is it important?"
- "Where does the final product(s) go?"
- "STEM opportunity"
- "Why is it good/important to treat wastewater?"
- "Need windows at kid height to see inside plant"

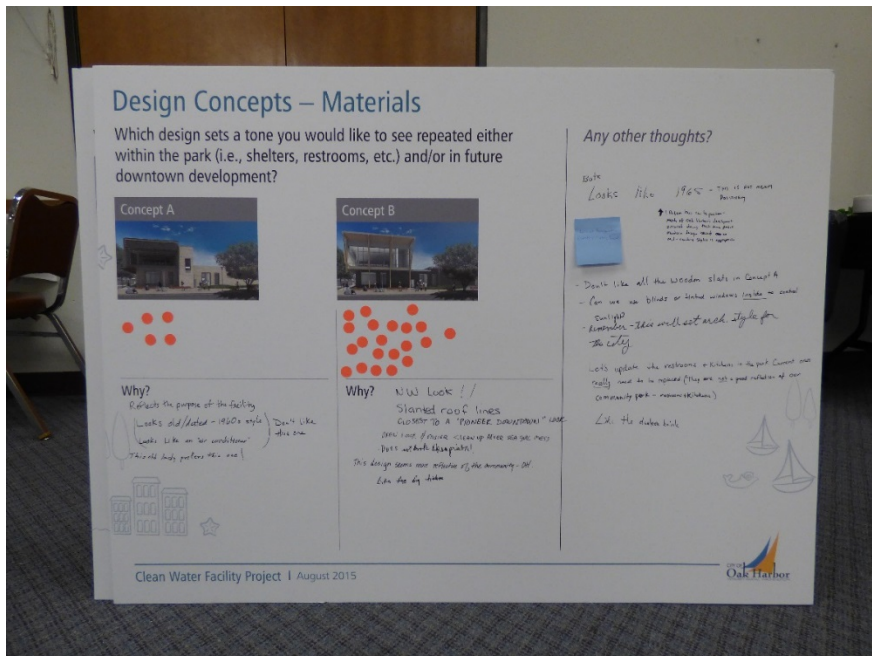
Appendix 3: Question and Answer Session at In-Person Open House

Note: the primary bullet points are questions, the second bullet points are answers.

- Will the structure be reinforced concrete buildings?
 - Largely below grade, concrete above grade with brick and veneer
- Are there any renderings of the entire wall? Maybe of east to west? Currently we are only seeing sections of walls.
 - The team would be happy to share additional elevations in person from more technical drawings.
- What's the traffic anticipated to be in and around the site?
 - Today, when you visit the existing facility and see traffic around the current treatment facility in Windjammer Park, there are a total of seven employees, and this is not expected to change dramatically. Solids will be a truck or two a day.
- Will the public be able to use the parking facilities?
 - Yes, they will be open to the public.
- Where would we park around the facility?
 - There will be south parking and street parking re-stripping
- Where is Bayshore today, vs. in the future?
 - Bayshore does not currently go through the ball fields.
- Given that we have all this extra building with the training [room], would you have a bathroom for public use?
 - There is not a current plan for exterior restrooms, but there will be some restrooms inside the facility in the interpretive lobby.
- Would the restrooms be open during working hours?
 - It's too early to answer that question. We need to figure out what goes inside the interpretive center. I'd like to say it would be 8-5, but we don't want to leave the room open without a docent.
- The bank will be torn down, where you can at least come in to a vestibule to go to the bathroom. I'm hoping for that same type of access – an outside door to the bathroom. Something that people can use during the day.
 - Please feel free to make that feedback on our comment cards.
- What about the current parking lot that has all the trees? These trees provide a lot of shade, and it would be disappointing to lose them.
 - You are talking about the parking area near the public restroom. We may need to remove some of the trees, but we will plant others.
- Is there a training room? Yes or no?
 - We are working on the 60% cost estimate which will come back in late September. Based on that estimate, other decisions will follow, including whether to move ahead with the training/community room and the solids treatment method. It will be Council's decision.
- Will the elevations change if there isn't a community facility in the building?
 - There are a few different scenarios. The solids building would not change, but the training room building would reduce in size.
- There seems to be a lot of confusion about Bayshore. The public envisions a road to nowhere.

- The transportation plan calls for Bayshore to go through. In the meantime, we need to plan on it going through, because that route is in planning documents. If Bayshore were to go through, it would go [here]. [Joe offered to show a local resident the plans.] When planning a facility of this nature, we must adhere to our city planning documents, which say that Bayshore will be connected in the future. So, we're planning something that looks like a parking lot but can be turned in to a street and trying to plan ahead. Initially, you won't know it from many other parking lots; Bayshore is not the focus of tonight's meeting, but welcome your feedback.
- The administration building seems very large for six employees. Can you cover why our existing treatment plant must be expanded?
 - This plant is right-sized for the facility, in fact, the first pass at the design was larger. The facility is doing the work of two facilities that exist today, and is being brought up to today's standards.
- Is this new facility bigger than the existing facility?
 - It's the size it needs to be. The new facility is treating about six times the waste that the old plant treated.
 - The existing plant has a capacity of 1.7 million gallons, while the new one will have 6 million gallon capacity. We will no longer be using the Lagoon Plant, which is why we need to have a bigger facility.
- What is the life expectancy of this plant?
 - The design life is through 2060. Depending on growth, it can last much longer than that. The last expansion of existing plant was in 1977, then another improvement in 1990s.



Appendix 4: Open House Board Photos



Design Concepts – Setting



Which design best fits into the Windjammer Park location?

Concept A

Why?
 - More people - materials
 - Ben Davis - The Boney - Better
 - This looks too industrial for a park (Don't know)

Concept B

Why?
 - More people - materials
 - Agree
 - MATERIAL - wood looks IS MORE IN HARMONY WITH A PARK
 - It's more of a beach club look & feeling
 - Blue lines - open - looks more welcoming (for institutional)
 - Much more inviting

Should the design make a statement or provide a backdrop to the park? Why?

PEOPLE, VISITORS - TOURISTS OR LOCALS, LOOK FOR AN "EXPERIENCE" A COMMERCIAL LOOK IN A PARK SETTING CONFLICTS + DOES NOT CONTRIBUTE TO THE "PARK" EXPERIENCE
 I agree with the other comment

Keep the training / conference space
 It's a great asset to this project + doesn't reading like it in Oak Harbor. It would be incredibly hard to add something like later. Keep the proposed size of the ring space and the view of the water.

Other notes:
 - More people - materials
 - Agree
 - MATERIAL - wood looks IS MORE IN HARMONY WITH A PARK
 - It's more of a beach club look & feeling
 - Blue lines - open - looks more welcoming (for institutional)
 - Much more inviting

Clean Water Facility Project | August 2015 Oak Harbor

Landscaping and Public Space

Does the design improve sidewalks and park access?

Improve sidewalks - Yes!
 Increased traffic really could cause access issues in the park @ Bayshore + reduce from (during steep slope)
 Consider plantings/curbs from sidewalk + make for better pedestrian + more attraction

Do the plantings reflect the beach park setting?

somewhat - if it goes there as presented
 - prefer as many drought resistant plants as possible
 - Use using native beach landscaping + US plants
 - Use the plants! Suggest the building + native plants are great
 Consider shrubs and using clematis in the landscaping

Any other thoughts?

Small area in landscape - better in future
 - Using area / present park
 Don't cheap out on the design
 This facility will set the architectural precedent for our community!
 - No one else has done what we are doing
 - You want a space that has history and character
 - Look to "beachside" for design of public space (more things to do)
 - Plant in Lignum / Akita Park
 - A water feature is desired
 - A water feature that you can look at and create in the future
 - Just add some trees + a little more by the water
 - Replace trees w/ large but you need more
 - Some trees at the water if possible
 - Get artificial cedar

Clean Water Facility Project | August 2015 Oak Harbor

Appendix 5: Online Open House Comments – General

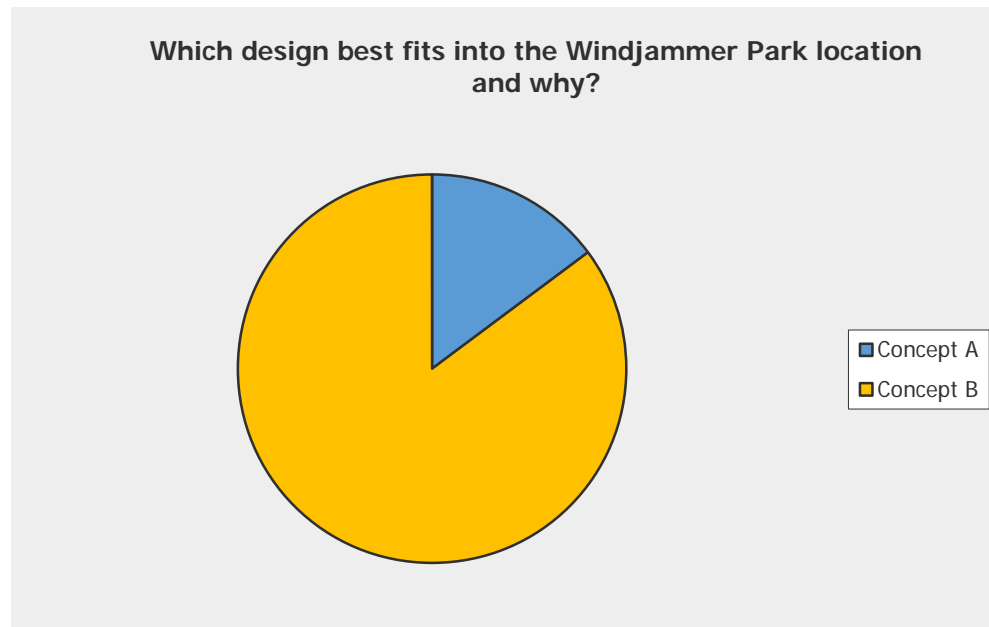
Name	Date	Communication
Susan Myers	08/14/2015	Please find someone to make artistic use of the old oak tree that Mayor Dudley had cut down at the post office. Turing it into two flat block benches in the exhibit area is sad.
	08/14/2015	Please find someone to make artistic use of the old oak tree that Mayor Dudley had cut down at the post office. Turing it into two flat block benches in the exhibit area is sad.
Scott Hornung	08/17/2015	Already on your list.
Barbara Berry-Jacobs	08/18/2015	Thank you for the opportunity for input! I have been unable to attend the workshops so far.
Rudolph Knaack	08/18/2015	Plantings of our native Garry Oak should be prominent in this facility.
Brian Giles	08/19/2015	Compost the biosolids? You have community members who have won the Composter of the Year award from the U.S. Composting Council. They are a resource. I am one of them. I don't live within city limits, but 98277 is my zip.
Gummy Bears	08/20/2015	This is a huge building I believe that it should be smaller. It's stupid big. Why does it have to be so big and like I said the Fourth of July carnival is there and if you build there
	08/21/2015	I truly hope that this survey is not driven by the crazies that want us to be stuck in the 50's and never change. I realize you want to take in to account everyone's viewpoint but I would bet the majority of rational people do not take the time to participate in these surveys. Please be wary! Thank you for your time.
Rick Lawler	08/21/2015	Relocate ball fields to another location and move treatment plant to straddle current location of City Beach Street. Elongate design of treatment plant. Does the plant design take into account the current state-of-the-art. Examples: Using sewage to generate power to run the plant? Incorporating clean water technologies and desalinization to provide more clean water and reduce dependence on purchased water? Does this design allow for growth in the future? Can it handle increased capacity or can it be augmented to handle increased capacity? Is the City going to establish a small but regularly increasing account to fund replacement of this treatment plant when it becomes obsolete in 20-50 years? If a fund is set up now with small monthly deposits, a portion of the new treatment plant will already be paid for when it becomes necessary, and less of a financial shock to residents of the City.
	08/21/2015	The big question is, "Will the facility improve/enhance or not Improve/ not enhance the air quality in the direct vicinity of its location?" Apart from that, anything is an improvement that I support. I'd have preferred the plant have been on the seaplane base with an assist on the price tag from the Navy.

Shane Hoffmire	08/22/2015	<p>Splash grounds! Nothing is more important to the city of Oak Harbor than a splash grounds being incorporated into the hardscape of this new facility. A splash grounds could put this project ahead with a positive, tying the new facility with the park. Nothing would benefit the economy and moral of Oak Harbor more.</p> <p>An open campus concourse with flowing sightlines from the parking lot along pioneer way into the park and terminating at a splash grounds.</p>
----------------	------------	---

Appendix 6: Online Open House Survey Results

Design Concepts: Setting

Which design best fits into the Windjammer Park location and why?		
Answer Options	Response Percent	Response Count
Concept A	14.8%	4
Concept B	85.2%	23
Why?		25
	<i>answered question</i>	27
	<i>skipped question</i>	3

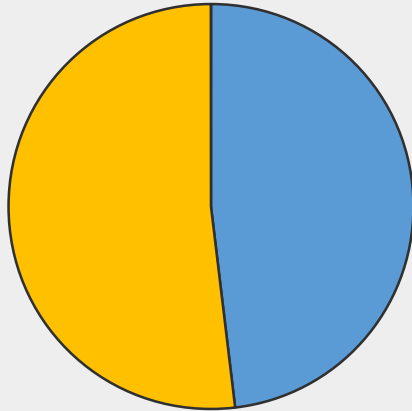


Which design best fits into the Windjammer Park location and why?
Does either say "Northwest" with materials that reflect our region? Doesn't appear to.
Large windows, very inviting!
It has more Northwest feel than concept A. However, I would love to see more northwest themed look to is such as more wood accents.
more of a rustic look, fits better with our community - both socially and visually.
Contemporary design
Defined concepts as looking at the building.
More modern and less blocky. Looks less like a treatment plant.
More interesting lines.
Concept A does not fit in with the style of Oak Harbor. It looks too modern for anything we have. It also looks industrial and if you are putting it in a park, the one on the bottom looks more rustic with an outdoor look and feel.
The darker brick and slanted roof work better. It is less industrial looking than the light walls in Concept A.
both of them are not my favorite but I like b better because it looks more modern
Although they both look very blocky and awkward and I do not think they look like something you would (or should) see near a beachfront town.

Concept A provides cleaner lines, and blends with surroundings.
Not sure I am crazy about either design
A is too "municipal". Flat roof will encourage seagull nesting which becomes a hazard for workers and pedestrians. B's design has some style and movement and might encourage some new thought toward design in the general area.
Concept A reminds me of cheap buildings from the 80's that haven't aged well.
Concept A does not appear to "reach for the sky" as much. The beautiful open space feeling of the beach is thus preserved.
They look like they fit into the park better rather than the so industrial A concepts.
more modern appearing
Neither. Both designs are too contemporary. Neither designs capture a historical NW theme. Neither designs capture the historical significance of Oak Harbor. Neither designs provide a connection to Oak Harbor's namesake -- the Garry Oak.
It looks less old fashioned. It has less brick and more wood.
Still concerned about seagull poop on ether concept? also how will wood stand up to salt air?
Neither. There should NOT be a Sewer Treatment Plant in our beautiful Park!
Better PacNorWest feel with exposed timbers and ability to get majestic views.
Concept A is too light in color and looks like mid 20th century architecture. The light masonry will look dirty in the future. This is said from experience of maintain similar brick on a building. The second conceptual image of concept A looks very institutional. It looks like a campus or library built in the 1960s.

For either concept, should the design "make a statement," or provide/fade into the backdrop of the park?		
Answer Options	Response Percent	Response Count
Make a statement	48.1%	13
Provide a backdrop	51.9%	14
Why?		23
	<i>answered question</i>	27
	<i>skipped question</i>	3

For either concept, should the design "make a statement," or provide/fade into the backdrop of the park?



■ Make a statement
 ■ Provide a backdrop

For either concept, should the design "make a statement," or provide/fade into the backdrop of the park?

Right now the Windmill is the dominant point in the park. Maybe it should be moved to the roof and the sides of the building that face the park can serve as ramps or stairs up to the edge of it with greenery, bench and view points out to the bay

It should provide a backdrop for the park and be a part of what makes the park make a statement. We don't want to take away from the beauty of our park.

As large as the facility is, it's going to make a statement regardless so let's make it good!
 it's permanent

if designed properly, would become part of the park campus.

We have too many ugly buildings, this building is regional and contemporary and fits in nicely.

The point of the park is not the treatment plant. The location was set not to make a point, in fact...it needs to be the least noticeable part per the citizen. The location was set because it was feasible and economical. It should blend in and provide a backdrop.

It is a state-of-the art facility and we should celebrate it in our community. Attempting to disguise a large building that will have lots of pedestrian traffic around, I believe, will create more curiosity around it.

Because no one wants a sewage place to make a statement

The beach/ocean/mtns should be the focus...

The park should be the priority here, and be the only thing that "makes a statement"...not the utility's buildings.

The Park is the attraction

A facility this size is not going to "blend in", lets make it something enjoyable to look at.

It's impossible to make it disappear. Just please don't let it be ugly.

This is not a fashion runway where a statement needs to be made. This large building should not purposely "stick out" and intrude upon the beach backdrop.

Please don't spoil our waterfront "feel"!

our city park is a sad excuse for a park. I would of like to of seen some incorporation into the park. Something has to make a statement down there!! Because it isn't our waterfront or park!

The plant should provide a preview of the historic section of downtown Oak Harbor and a connection to the Garry Oak.

Looks more open

We can't hide the thing, it is way too big. So let's make a statement with it. How about adding some curves to evoke waves and wind, these structures are way too blocky.

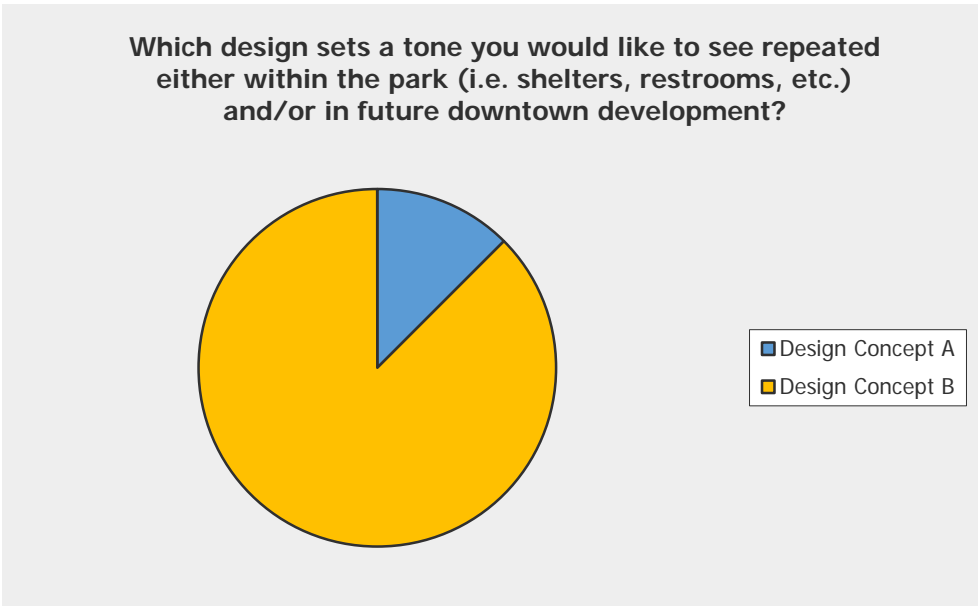
Neither. It WILL make a statement, no matter what, because it is going to be SO HUGE. Everyone is fooling themselves with the "fade into the backdrop." The statement in B is too modern. It is not "northwest."

This should be the centerpiece of our city, a technological tribute and educational center. Its cost helps justify its status and its quality should showcase our pride in it. Hopefully an amphitheater will be part of this.

I lean towards subtly complementing the park, but could be in agreement with making a statement depending upon what is provided for the park user. If it makes a statement, it will draw park users to it only for them to find out that it is not for their use, except for the interpretive area and possibly public bathrooms (if they are available). The reason to make a statement and draw park users to the facility is if there is something for them to use or enjoy. If there is going to be a very nice interpretive area inside and a large pedestrian plaza area outside with picnic/furniture facilities and a pleasant sitting area, then making a statement is fine. If there is little for the park user, provide it as a backdrop.

Design Concepts: Materials

Which design sets a tone you would like to see repeated either within the park (i.e. shelters, restrooms, etc.) and/or in future downtown development?		
Answer Options	Response Percent	Response Count
Design Concept A	12.5%	3
Design Concept B	87.5%	21
Why?		22
	<i>answered question</i>	24
	<i>skipped question</i>	4



Which design sets a tone you would like to see repeated either within the park (i.e. shelters,

restrooms, etc.) and/or in future downtown development? Why?

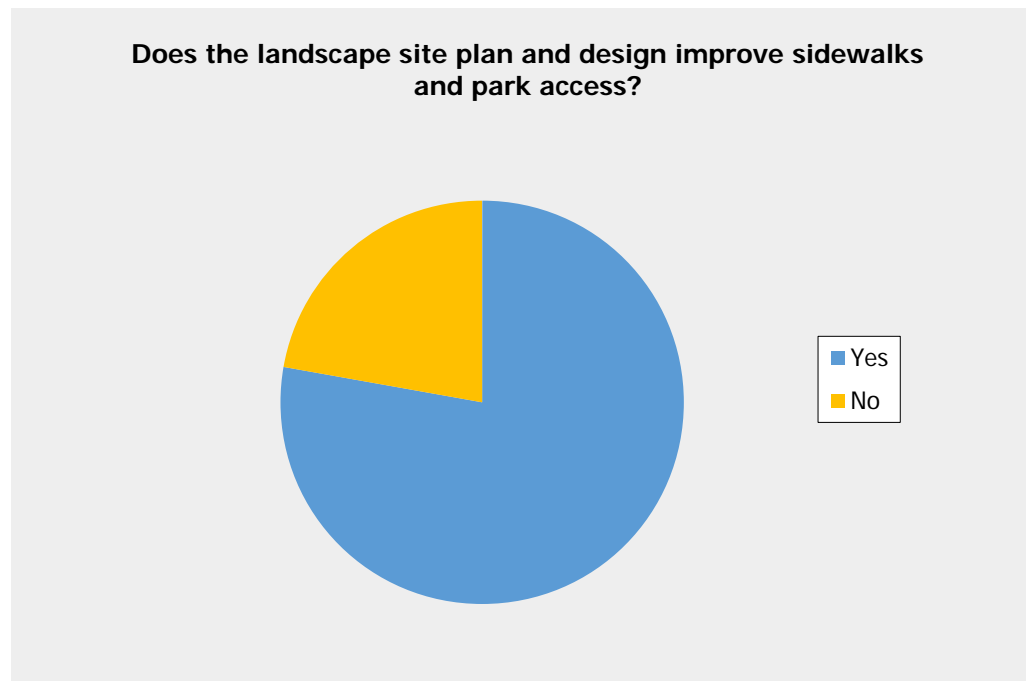
See my previous comment as a way to keep the windmill as the focal point and ramp/stair-step up to it using the building as an approach to the height where the windmill could sit. Save your money on architectural features and make the sides of the building(s) more compatible with a park look
Design B is more welcoming and fits the area. Design A feels like a prison.
More wood in design. Still very modern-looking. Too bad there isn't more of a rustic feel in these materials.
Current.
More inviting.
I like the over hang, it is interesting and it serves a purpose, protection from sun and rain.
Again, I say Concept B because it is more rustic looking. It is a park and modern is not what we should be after...we should be after compatibility with the existing environment.
I like the darker materials and would also like to see darker wood used for the sunshades and timber framing.
It's a little less noticeable because it's a sewage plant and no one likes to see sewage plants
I'm not crazy about either one... however materials that represent the NW should be present. I do like the heavy timber framing/weathered wood and painted metal.
Same reasons as stated above.
I would prefer more wood and brick/rock type siding.
It looks better now, and it looks like it will look better in the future.
It has more of a traditional look that fits the pacific northwest.
I really do not like any of the materials to be repeated in future downtown developments! None of these look like seaside or nautical structures.
again, more modern. I guess it depends on what else would be going in down there in the future though
Neither. Incorporate the unique roof line of the old Pioneer Dept store/Co-Op and the brick Diamond pattern of the old Kennel (now Off the Hook)
The wood look is the Northwest look
I like the deep overhangs on the windows with lots of wood.
Neither. The architect hasn't got it yet. I don't like A or B
Better use of local resources.
I like the heavy timbers and exposed rafters. It creates a more welcoming feeling. I like the colors of concept B. I do not like the dirty white brick of Concept A at all. There are plenty of buildings with similar brick that are commonly considered to be unattractive. The timber design fits more with recently built picnic shelters at Fort Nugent Park, and a proposed possible future picnic shelter in Windjammer Park. The timber design has more NW feel to it. I do not care much for the triangular shapes created by the timbers supporting the roof overhang on concept B. I would prefer that the timber be placed vertically and be used to support a balcony off of the training room. Concept A would be much more attractive by merely changing the color to red or brown brick. People like old red brick buildings, but not white brick.

Landscaping and Public Space

Does the landscape site plan and design improve sidewalks and park access?

Answer Options	Response Percent	Response Count
Yes	77.8%	21
No	22.2%	6
Why?		14

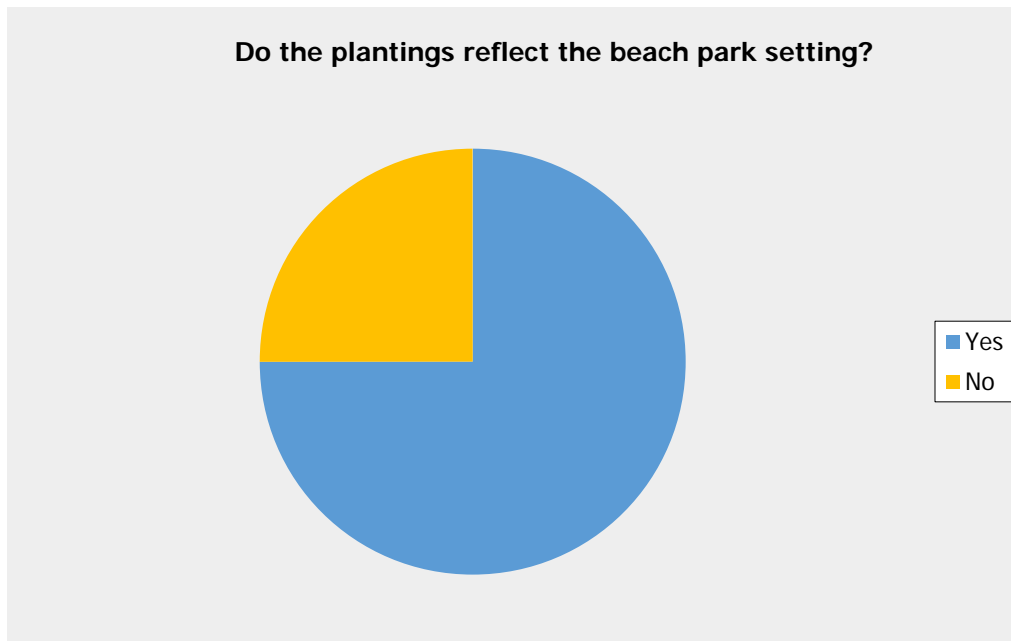
<i>answered question</i>	27
<i>skipped question</i>	4



Does the landscape site plan and design improve sidewalks and park access?
How does it succeed blending park and sewer treatment? Use a hanging garden from the top of the east facing building to soften and hide
There must be a wide campus like corridor from the parking lot along pioneer way leading directly into the park. Increasing accessibility and creating a wonderfully inviting sightlines. Shirt of this there is certainly no improvement.
Because it is actually a professionally designed landscape that invites people in. Plus I am sure it is more environmentally conscious.
It appears to open up the space for more sidewalk and park access. Currently I feel we have only a couple of entry ways into the park due to the wall of buildings that line Pioneer Way.
Like new parking on Pioneer with a potential to be a gateway into Windjammer. With appropriate signage this makes a definite entrance and parking area to enjoy the middle of the park. Much improved!
Hard to tell
It looks like it directs foot traffic in effective pathways.
I think that access stays pretty much the same. I don't see any real improvement there.
There was never any obstruction or problem with parking, park access or sidewalks to begin with.
Anything to hide the industrial feel of the building!
because its new
Would like to see an entrance/exit in to the Wells Fargo parking lot and out to Bayshore
People are not going to linger at the Sewer Treatment Plant. There is limited need for benches and wide gathering areas. All of us will be headed to the beach and other areas of the park. The Treatment Plant will be an unfortunate obstacle that jars the esthetic of Windjammer Park.

It does in general. Curb ramps are still needed, and a significant pedestrian connection across City Beach Street to the baseball side should be considered, probably at the SE corner of the facility.

Do the plantings reflect the beach park setting?		
Answer Options	Response Percent	Response Count
Yes	75.0%	21
No	25.0%	7
Other (please specify)		13
<i>answered question</i>		28
<i>skipped question</i>		3



Do the plantings reflect the beach park setting?
If there is room for a madrona "pretty but extremely messy and not maitanene [sic] friendly" I'd rather see oak trees used where suitable in "Oak Harbor"
To a certain extent.
It is a pleasing variety.
The trees do not reflect a beach setting
Shore pine and madrone are the quintessential NW shore trees. However, I see there is no use or plan of use of Garry Oaks in the plants. This may be a concern of aesthetics and ease of cultivation over ecology, but the Garry Oak is Oak Harbor's namesake and the only native oak to our area. It can flourish in a wide range of habitats with a range of growth forms, from a large spreading canopy to a low craggy shrub. These trees can be found on south facing aspects throughout the region and it would be lovely to see some incorporated into the planting plan.

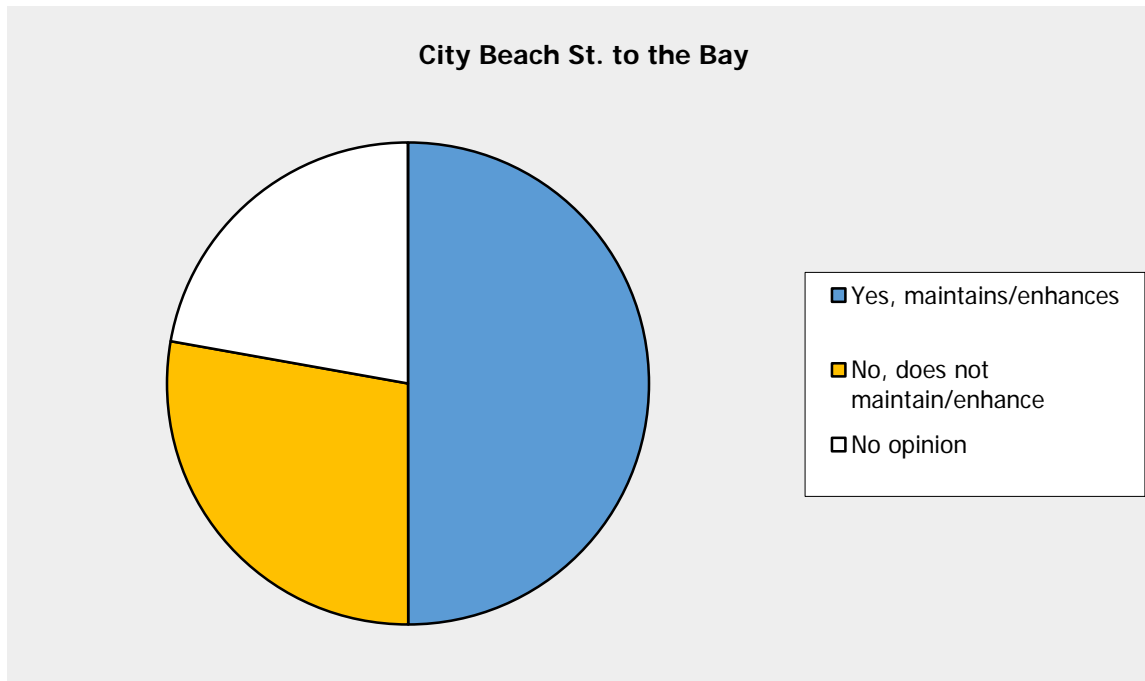
I wish there was another place to check along with yes and no that is neutral. I don't negatively about the landscaping - I just don't know that the plantings particularly reflect the beach park setting. The plantings are nice and hopefully will help to de-emphasize the shear size facilities building in that location.
Use of native plants that are in beach environments needs to be a top priority. They are most suited to the habitat. Other plants can be incorporated as well of course, but native beach plants should be utilized first. Check out the sand dune trail at DPSP for examples. Consult with WA Native Plant Society for further info.
If we are talking Oak Harbor why not Garry Oaks our name sake not the swamp and white oak.
The tree list does not include the Garry oak, which is native to our Harbor and is currently listed as a "priority" in need of planting by the Washington State Native Plant Society. This omission is inexcusable. The Regal Prince Oak is not a wise choice for Oak Harbor.
the more trees the better
Needs to be low cost maintenance.
I like the beach grasses if they are not the big tall kind. The "beach pine" gets scraggly, so isn't a first choice for me. Salal is native, but I didn't see it in the plan.
The madrone and shore pine do. The Black Tupelo, Magnolia, and Prince oak do not. If those three are street trees, great, but they don not seem like beach trees.

What other comments do you have about landscaping?	
	Response Count
	20
<i>answered question</i>	20
<i>skipped question</i>	11

What other comments do you have about landscaping?
Gary Oaks should be used in any place where trees will be planted. To make this town a true Oak Harbor again
Please use Gerry Oak Trees in place of Pacific Madronas
Get Karla Freund involved. She's schooled and experienced in great design
It should feed into and improve the setting for the windmill.
I love the fact that there are NO Garry oaks!!!
I definitely like art and specifically art that reflects the area, not what the artist likes to do.
Do not care for the coastal dune type grass that looks unkempt.
There should be some Garry Oaks included, either in the planting around the Facility, or nearby in the park or both.
Just keep the landscaping simple but refreshing with some benches and tables to enjoy. We should not provide any hidden areas for the Homeless. People want to feel safe.

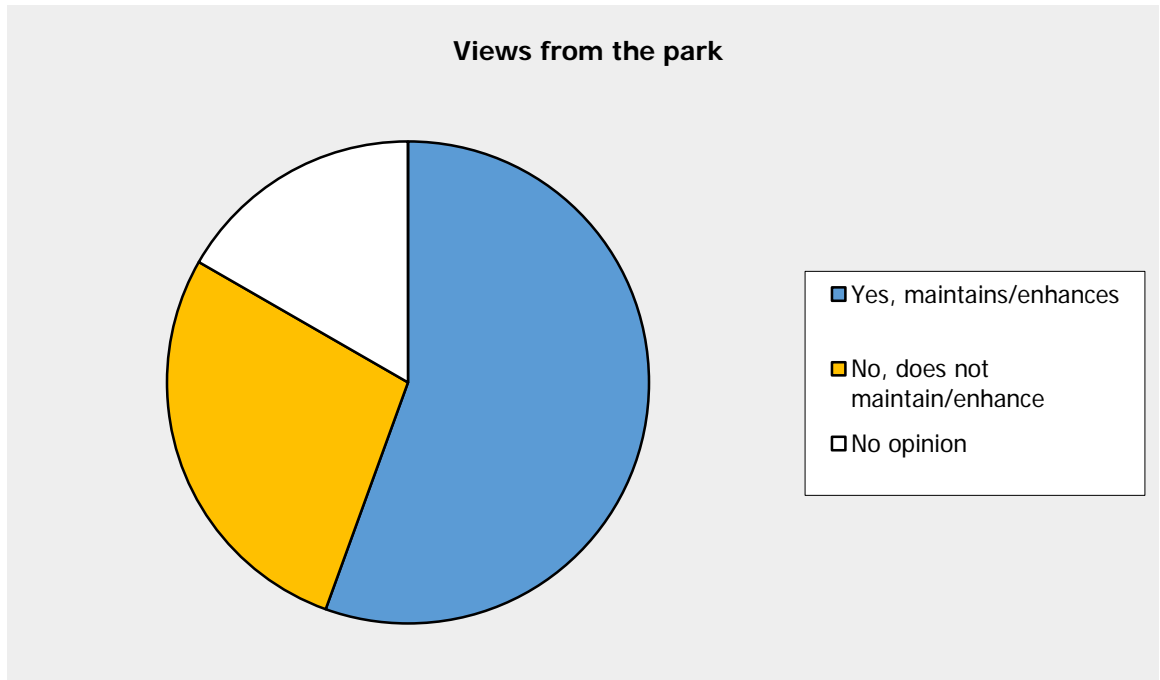
Views and Sightlines

City Beach St. to the Bay		
Answer Options	Response Percent	Response Count
Yes, maintains/enhances	50.0%	9
No, does not maintain/enhance	27.8%	5
No opinion	22.2%	4
Why?		8
	<i>answered question</i>	18
	<i>skipped question</i>	1



City Beach St. to the Bay comments
Not much change.
I don't see a noticeable difference at all.
Not a big improvement, but not negative either.
It's ugly
facility is not clearly visible from the angle shown.
You are using trees that are way bigger than what they will be for many years.
Not much changed. I wish we had funding to bury the utility lines. ...
View is not affected much.

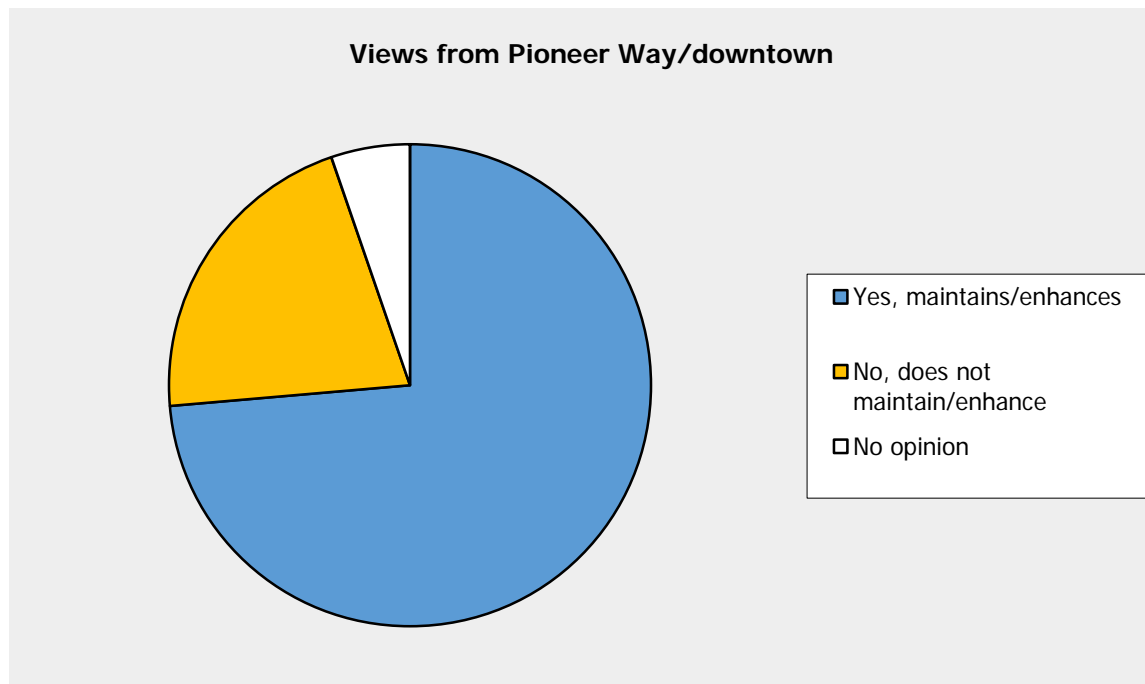
Views from the park		
Answer Options	Response Percent	Response Count
Yes, maintains/enhances	55.6%	10
No, does not maintain/enhance	27.8%	5
No opinion	16.7%	3
Why?		8
	<i>answered question</i>	18
	<i>skipped question</i>	1



Views from the park comments
It only enhances or maintains its relationship with the park if a splash pad is part of the hardscape.
It is a nicer look than what is there now.
I don't see any problem with the after views at all. It actual makes it look like there is more to do down there.
Looks better
It's ugly
Again, it will be huge and dominate our park.
Good modern architecture.
RE: View from Park Parking Lot - It is not an issue as long as the trees are leafed out. Concept A, if kept with dirty white brick will detract from the view once the leaves fall. RE: View from Park Baseball Fields. Concept A looks like a dirty white institutional/industrial building in the background.

Views from Pioneer Way/downtown		
Answer Options	Response Percent	Response Count
Yes, maintains/enhances	73.7%	14

No, does not maintain/enhance	21.1%	4
No opinion	5.3%	1
Why?		9
	<i>answered question</i>	19
	<i>skipped question</i>	0



Views from Pioneer Way/downtown comments
It opens up the view to the beach and creates parking. One view that was not voted on was the view from the Baseball Fields. This view is substantial reduced and made worst in my opinion. You are not longer able to see the beach and windmill from Bayshore.
This building is an asset to our community!
Anything that can be done with this view is an improvement. The buildings are dreary and there is no vegetation or anything beautifying the area.
Looks better
Its better
It is too large a "footprint" for our waterfront & downtown area. I am terribly disappointed in the location of this project!
Look at how full and dominant the illustration of trees is. This is not actually what it will look like.
Much better view. Greener, inviting.
The parking lot trees really improve the view over the existing building.

Educational and Interpretive Opportunities

1. History and local lore	
Answer Options	Response Count
	11
	<i>answered question</i> 11
	<i>skipped question</i> 9

History and local lore comments

History and local lore but done in a way to pose the question of what our future which we control holds.
Opportunity to build a sense of community in Oak Harbor.
Native American and OH Pioneer displays
Yes, great historical info and pictures.
I don't believe the treatment plant should represent any history or local lore. Pioneer Way would be a more fitting place for that.
City History, old photos. Use of Post Office Oak tree lumber.
Interpretive signage about the historic use of the site by native groups would be welcome.
For sure, this needs to be included with some vintage photos of O.H. Please include the Maylor Pier.
Even though the ICHS museum is only 10 miles south of Oak Harbor, it is not conducive to visitation by the residents of Oak Harbor, and the subject matter on Oak Harbor history and lore is lacking in breadth of coverage. This facility could provide a place for displaying facts about Oak Harbor history that would be more conducive to visitation by the residence of Oak Harbor.
This and the Biology opportunities Concepts should be save for the up-date of the park.
Include Native Americans, Irish, Dutch and Navy heritages. Include ship history, travel by canoe, deception pass bridge, dredging and changing of harbor, dock fire, Post Office Oak, etc.

2. Biology and ecology

Answer Options	Response Count
	9
<i>answered question</i>	9
<i>skipped question</i>	11

Biology and ecology

This would be a wonderful idea if done in a way that allows for the Oak Harbor schools to use the area as an interactive outdoor classroom.
Great opportunity to educate our youth and citizens about water/land.
Parks department involvement for courses Beachcombing organizing & birdwatching groups and star gazers can all use a place
How the plant works and keeps the harbor clean. What happens in the event of an emergency?
Yes, info about local sea life and preserving it.
Definitely incorporate biology and ecology concepts. That is what this is all about. Maintaining our natural resources while providing a service of waste disposal.
Nothing is as sexy as wastewater biodigestion. Perhaps some notes on the ultimate fate of the treated wastewater.
Include some...not a bunch.
Please include Garry oaks and their habitat amongst the probable salmon, orca, and wetland information.

3. Wastewater engineering and infrastructure

Answer Options	Response Count
	9
<i>answered question</i>	9
<i>skipped question</i>	11

Wastewater engineering and infrastructure comments

educate public on the facility
How the plant uses waste to generate its own power, and how the plant produces clean water via treatment as well as converting sea water to clean water, both of which are then used to augment the City's purchase of water.
Yes, education about the world around us and how we can have less of an impact on it.
Definitely, wastewater engineering and infrastructure is a huge component of the treatment plant and should be reflected. I like the pipe picture and that is very educational for someone that does not know what infrastructure is. I like the idea that it is more outside, than inside items so that there is easy access and anyone can view them at anytime of the day.
Speak about the engineering feat of laying a pipe underwater for hundreds of feet.
Basic info.
Yes. Anything to show & tell what makes the plant work.
Should accomodate both middle school and high school level interest.
People like interactive displays, Kids especially like those that flow. It would be nice if some would allow the participant to release/active a flow, or at least observe the flow.

4. Other ideas

Answer Options	Response Count
	13
<i>answered question</i>	13
<i>skipped question</i>	7

Other ideas comments

If you had a lagoon system then justifying an "outreach" would be fine. Don't waste money tell us how our crap is processed. Besides most of the outreaches I've seen are too general to be of much use. Most folks know a little about those subjects anyway
Should incorporate a water park feature into the building plan instead of a fountain like a splash park of some sort
Incorporate interesting drinking water and wastewater tidbits such as Americans on average waste x amount of gallons of drinking water a day at an average cost of. Name some land and marine animals heavily effected by our poor habits.
art in the park!!!!
Has the design taken into consideration possible rises in sea level, earthquakes/tsunamis, backflow from large storms?
Love the interactive concept.
I forgot to mention in my last comments that I believe a splash park should be incorporated into this project and used as a component of the educational opportunity. Maybe components of the splash park could be pipes and infrastructure related. Water could splash or gush out of pipes to drench the kids. Just a thought.
Make it smaller because the 4rth of July carnival is there and now people will be mad
Rotating displays from different organizations, student projects, etc.
how many thousands of dollars would it take for a museum type atmosphere!? its water treatment. Not that interesting. Spend it elsewhere!
You need to have windows that run all the way down almost to ground level. I guarantee that every 3 or 4 year old will want to see inside to find out "where all the poop goes", and their Dads and Moms will have to lift them up to see inside under these current designs. You will make these windows ADA accessible also by putting them low enough that someone seated in a wheelchair will be able to see inside.
The stone in the last picture is much better than the "brick" that has been proposed.
Place the post office oak tree ring/timeline count in the interpretive area.

Appendix 7: Advertisements and Notifications

Channel 10 Slides:

City of Oak Harbor
Clean Water Facility Project

YOU'RE INVITED!

Design open house
Wednesday, August 12
6:00 – 8:00 p.m.
Elks Lodge (155 NE Ernst St.)

www.oakharborcleanwater.org

City of Oak Harbor
Clean Water Facility Project

YOU'RE INVITED!

Design open house
Wednesday, August 12
6:00 – 8:00 p.m.
Elks Lodge (155 NE Ernst St.)

JOIN US AT THE OPEN HOUSE

- Provide input on current design ideas
- Hear the latest news on the project
- Talk to staff about the project
- Share your thoughts on how the new facility can best fit into Windjammer Park

www.oakharborcleanwater.org

City of Oak Harbor
Clean Water Facility Project

**MISSED THE DESIGN OPEN HOUSE?
IT'S NOT TOO LATE!**

August 13 – 21

- See the latest renderings
- Provide input on current design ideas
- Share your thoughts on how the new facility can best fit into Windjammer Park

Visit the website to share feedback online:
www.oakharborcleanwater.org

www.oakharborcleanwater.org

Whidbey News-Times and Whidbey Weekly (paper) Ad:

City of Oak Harbor
Clean Water Facility Project

WATCH US WORK

YOU'RE INVITED!

Design is Progressing
SHARE YOUR THOUGHTS!

The project team has been hard at work developing the design of the facility based on input from our workshop group and City Council. Now we want to share the design with the community and hear from you.

Join us at the open house where you will have the opportunity to:

- Provide input on current design ideas
- Hear the latest news on the project
- Talk to staff about the project
- Share your thoughts on how the new facility can best fit into Windjammer Park

Design open house

When: Wednesday, August 12
Time: 6:00 – 8:00 p.m.
Where: Elks Lodge (155 NE Ernst St.)

**Can't make it in person?
We still want to hear from you.**

Visit our online open house
When: August 13 – 21
Learn more: www.oakharborcleanwater.org

Windjammer Park is OPEN!

Outfall construction and early site work underway

As design continues on the new treatment facility, crews have started early site work to confirm soil conditions and verify construction costs. Crews are also replacing the existing outfall pipe, which has failed. The new pipe will carry treated water from the new wastewater treatment facility into Oak Harbor Bay.

For more information on what to expect during construction, visit:
www.oakharborcleanwater.org

This project has been funded wholly or in part by the United States Department of Interior, Agency Water Use Protection Agreement with the Washington State Department of Ecology. The contents of this document do not necessarily reflect the views and policies of the United States Department of Ecology, nor does the mention of trade names or commercial products constitute endorsement or approval for use.

treatmentplant@oakharbor.org | www.oakharborcleanwater.org
Have questions about the project? Call 360-914-7000

Whidbey News-Times Online Ads:

YOU'RE INVITED
Design open house
 Wednesday, August 12
 6:00 – 8:00 p.m.
 Elks Lodge (155 NE Ernst St.)
 City of Oak Harbor
 Clean Water Facility Project

CLICK AND SHARE
FEEDBACK ON DESIGN
AUGUST 13 – 21
www.oakharborcleanwater.org
 City of Oak Harbor
 Clean Water Facility Project

Postcard:

City of Oak Harbor
 Clean Water Facility Project
 July 2015

YOU'RE INVITED
Design is progressing
SHARE YOUR THOUGHTS!

The project team has been hard at work developing the design of the facility based on input from our workshop group and City Council. Now we want to share the design with the community and hear from you.

Design open house
 When: Wednesday, August 12
 Time: 6:00 – 8:00 p.m.
 Where: Elks Lodge (155 NE Ernst St.)

Join us at the open house where you will have the opportunity to:

- Provide input on current design ideas
- Hear the latest news on the project
- Talk to staff about the project
- Share your thoughts on how the new facility can best fit into Windjammer Park

Can't make it in person? We still want to hear from you.
 Visit our online open house
 When: August 13 – 21
 Learn more:
www.oakharborcleanwater.org

treatmentplant@oakharbor.org
www.oakharborcleanwater.org
 Have questions about the project? Call 360-914-7000

City of Oak Harbor
 Clean Water Facility Project
 City of Oak Harbor
 885 SE Barrington Drive
 Oak Harbor, WA 98277

YOU'RE INVITED
Design open house
 When: Wednesday, August 12
 Time: 6:00 – 8:00 p.m.
 Where: Elks Lodge (155 NE Ernst St.)

Appendix 8: Photo comments (from participant Susan Myers)

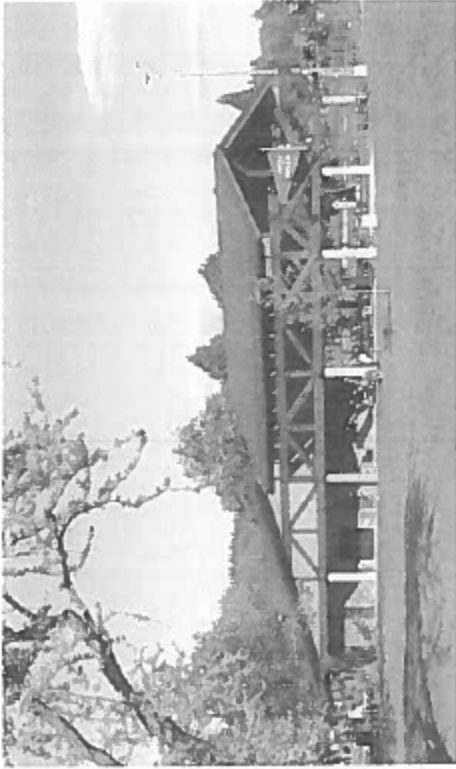
Some timbers (not everywhere) Some Stone (not everywhere) smooth finish for economy



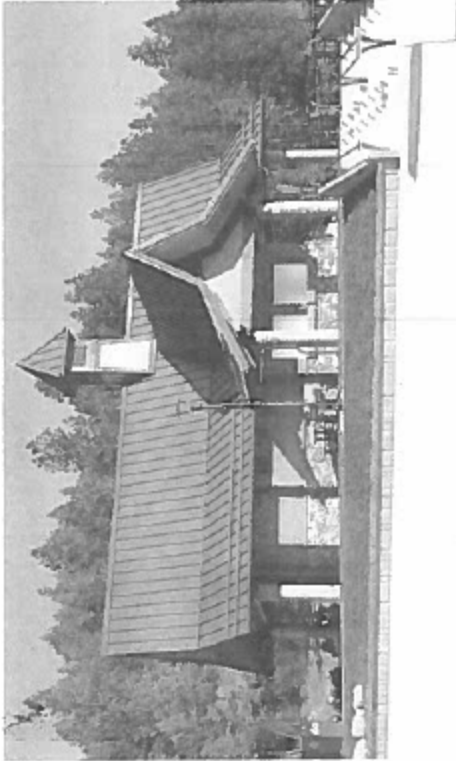
roof overhang



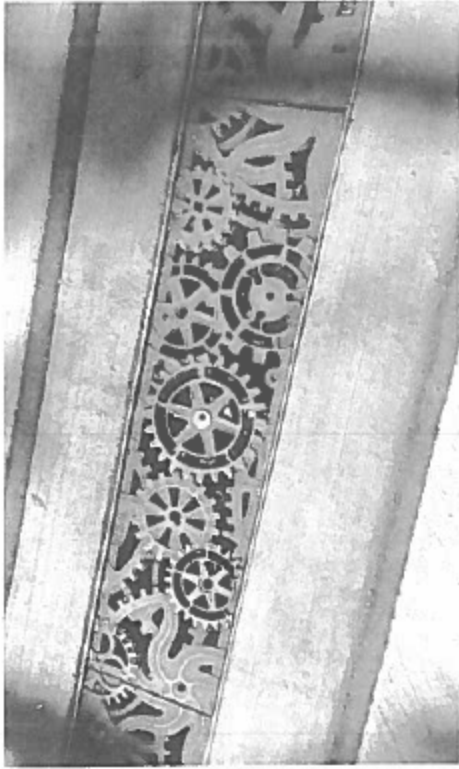
Susan Myers
682-6552



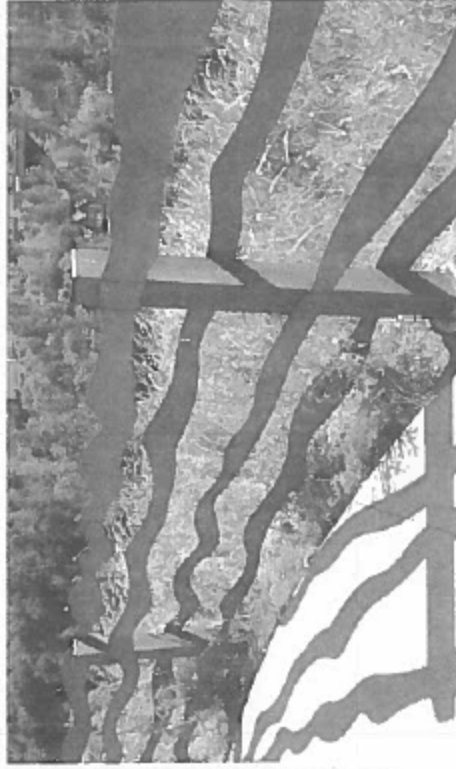
Seeding - stones fill the base section, water is only a few inches deep.



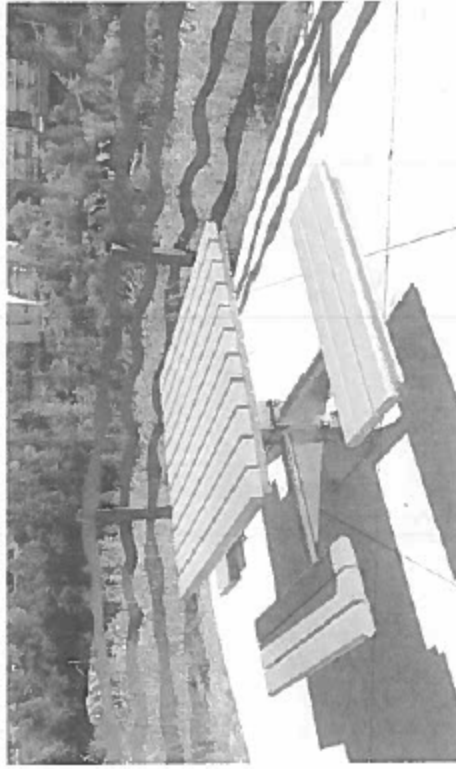
Susan Myers
482-6552



Attractive grating for water drains



Whimsical metal fence



*Susan Myers
682-6552*